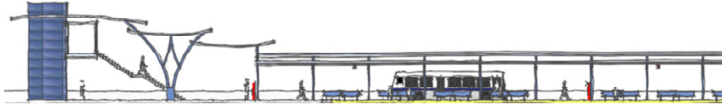
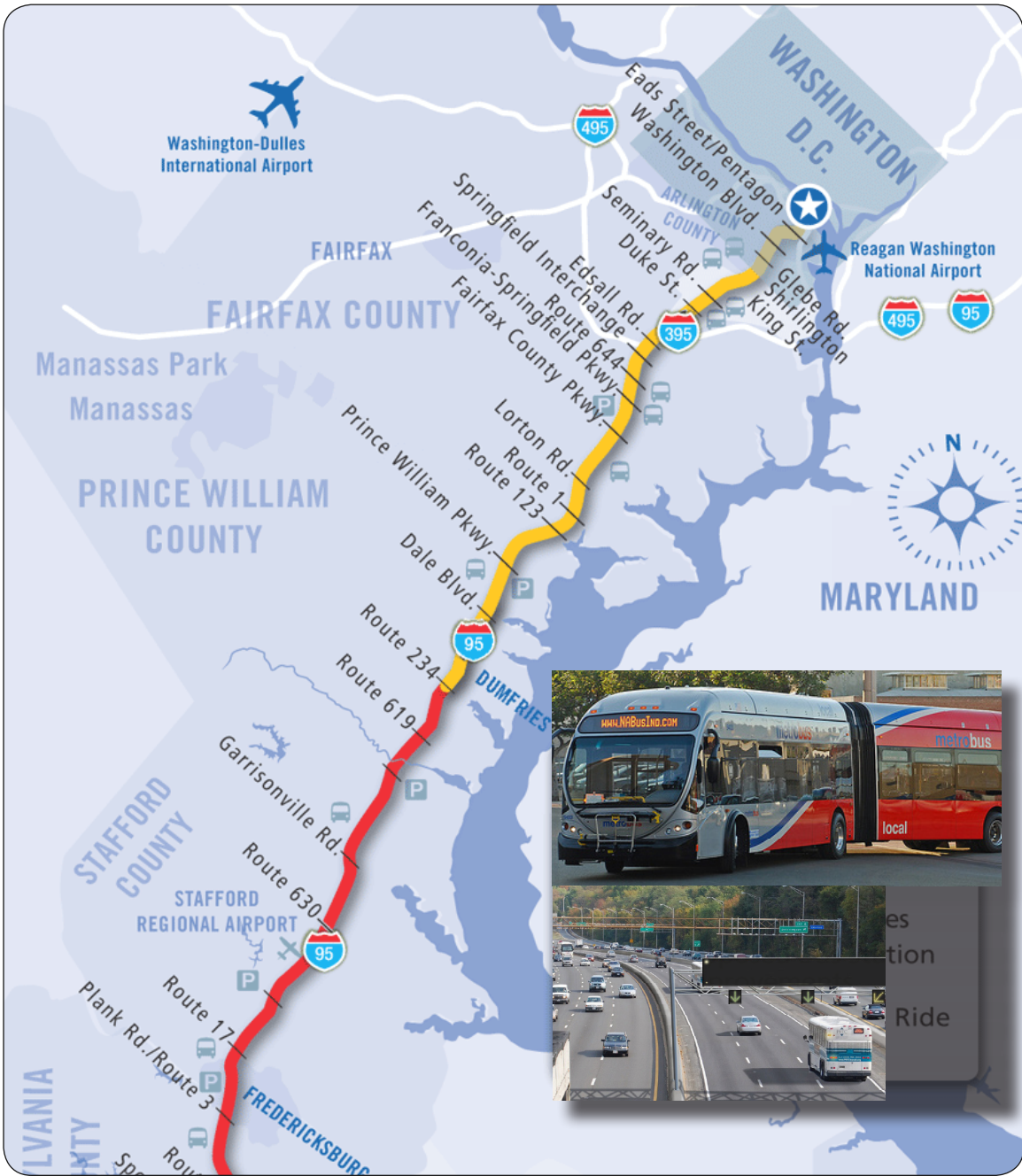


# I-95/I-395 BUS RAPID TRANSIT STUDY



Final Report  
April 2010



# I-95/I-395 BUS RAPID TRANSIT STUDY

***Prepared for:***  
Transit Operators Committee

***Prepared by:***  
Virginia MegaProjects  
(ATCS, Baker as General Engineering Consultants)

***Final Report***  
***April 2010***



# I-95/I-395 BUS RAPID TRANSIT STUDY

## **Acknowledgements**

- *Virginia MegaProjects*
- *City of Alexandria;*
- *Arlington County;*
- *Fairfax County;*
- *Fredericksburg Regional Transit (FRED);*
- *Fredericksburg Area Metropolitan Planning Organization;*
- *Potomac and Rappahannock Transportation Commission;*
- *Prince William County;*
- *Northern Virginia Transportation Commission;*
- *Virginia Railway Express (VRE);*
- *Washington Metropolitan Area Transit Authority (WMATA).*
- *Metropolitan Washington Council of Governments*



# I-95/I-395 BUS RAPID TRANSIT STUDY

## **Table of Contents**

<b>Executive Summary</b>	<b>ES-1</b>
<b>Chapter 1: Introduction</b>	<b>1-1</b>
1.1 Study Area Limits	1-2
1.2 Coordination Among Stakeholders	1-4
1.3 Previous Recommendations	1-4
1.4 Report Organization	1-5
<b>Chapter 2: Conditions Within the Corridor</b>	<b>2-1</b>
2.1 Corridor Land Use Conditions/Recent Changes	2-1
2.2 Transit Operations in Corridor	2-4
2.3 Transit Providers in Corridor	2-5
2.4 Changes Incorporated Into the Market Assessment	2-8
2.5 Regional BRT Context	2-10
<b>Chapter 3: BRT Definition</b>	<b>3-1</b>
3.1 BRT Components	3-1
3.2 Running Ways	3-2
3.3 Stations	3-2
3.4 Vehicles	3-6
3.5 Fare Collection	3-6
3.6 Intelligent Transportation System	3-8
3.7 Service and Operations Plan	3-8
3.8 Marketing and Branding	3-10
3.9 Corridor Considerations	3-10
<b>Chapter 4: BRT Operating Scenarios</b>	<b>4-1</b>
4.1 Considerations in Development of Demand Forecasts	4-1
4.2 Forecasting Framework	4-2
4.3 Development of Forecasts	4-4
4.4 BRT Operating Scenarios	4-5
4.5 Findings	4-14
<b>Chapter 5: Analysis of Priority Bus/BRT Scenario</b>	<b>5-1</b>
5.1 Priority Bus/BRT Service Recommendations	5-1
5.2 Station Infrastructure Requirements	5-3
5.3 Cost Estimates	5-3
5.4 Station Area Plans	5-5
<b>Chapter 6: Recommendations</b>	<b>6-1</b>
6.1 Relationship to Previous Report	6-1
6.2 Next Steps/Additional Analyses	6-1
<b>Appendix A</b>	<b>A-1</b>

